

“Your Ideal Kitchen Partner”

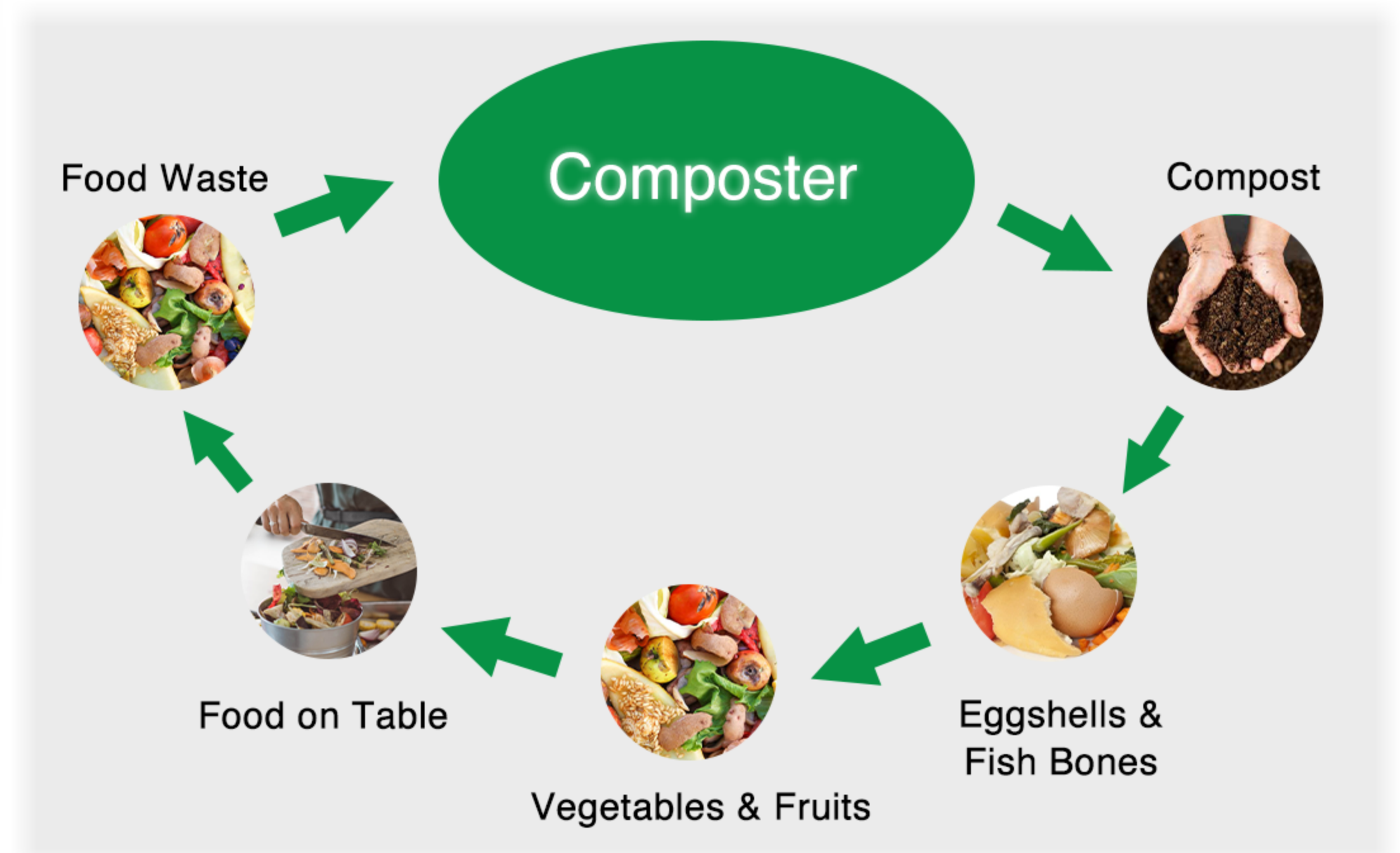
Smart Kitchen Composter



## Turn your Food Waste, to Fertilizer

- Quick Compost - Turn food waste into compost within 4 hours.
- Reduce waste volume up to 90%.
- Assure odorless and pest deterrent.
- Save disposal costs.

Sustainable and socially responsible!



## Features

- ABS shell, metal barrel top cover replaceable activated carbon cartridge.
- Button manual opening 95° artificial aesthetic slimming design.
- Slow grinding, high-temperature drying, high-temperature sterilization, deodorizing.
- Drying + grinding + odor filtering + intelligent cooling, 90% weight reduction.

## Compact

- No installation, small size, can be placed anywhere, plug and play. Perfect for household applications where a small volume of food waste is produced.

## Ease to Operate

- Simply open the lid and empty food waste into the machine.
- Once the lid is shut, TMK-1 will immediately slow grinding + high-temperature drying.

## Benefits

- The most energy efficient: only 0.1-0.5kWh.
- 90% MAX Reduction rate.
- Energy efficient, with no wastewater discharge.
- No Smell, No Trouble: The main unit has an odor filter and carbon filter.

### Specifications

#### Waste Input Capacity

1L to 2.5L per day

#### Treatment Time

1L working time is 2.5-3 hours

Lasts 5-8 hours at 1.5L

2.5L 15-16 hours

#### Average Wastage Reduction

85%-90%

#### Power Supply

Single Phase

AC220V, 50Hz/110V, 60Hz

#### Max. Power Draw

470 Watt

#### Power Consumption Reference

Average 35-45kWh/month

(Actual electricity consumption may vary depending on use)

#### Processing Method

Drying/Grinding/Sterilizing

#### Feeding Method

Continuous or Intermittent

#### Odor Remover

Activated Carbon Filter

#### Function

Slow Grinding, High Temperature Drying

High Temperature Disinfection, Deodorizing

#### Dimension

250\*250\*325mm / 9.84\*9.84\*12.79 inch

Weight: 8.5kgs

#### Machine Material

ABS + Stainless Steel

#### Applications

- Residential Kitchen
- Coffee Shops
- Office Kitchens
- Test Kitchens

