

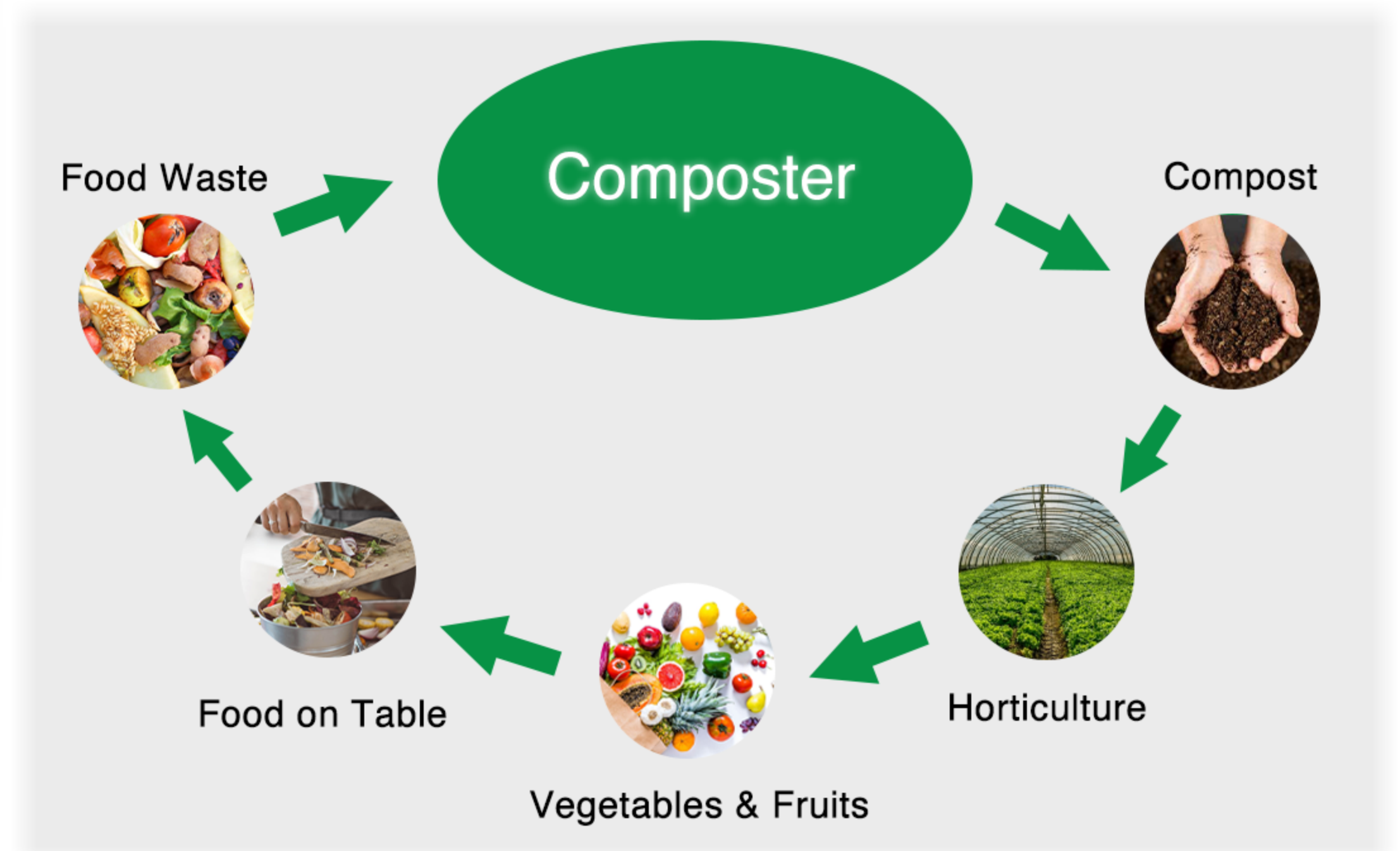
“Your Ideal Kitchen Partner”

## Food Waste Composter

### Turn your Food Waste, to Fertilizer

- Continuous and quick degrading process by bacterium.
- Reduce waste volume up to 90%.
- Assure odorless and pest deterrent.
- Save disposal costs.

Sustainable and socially responsible!



### Features

**TMK-30, an innovative and efficient method of composting small scale business food waste**, turning waste into a valuable resource that can be used to fertilize plants or grow fruits and vegetables. Helps users divert food waste from the landfill, reduces the amount of methane gas generated from organic waste, and decreases carbon emissions, and one's carbon footprint.

### Compact

- Equipped with a small footprint, perfect for commercial applications where small volume of food waste is produced.

### Ease to Operate

- Simply open the lid and empty food waste into the machine.
- Once the lid is shut, microbes will immediately begin composting food waste.

### Benefits

- Accelerated continual process to convert food waste to compost.
- 90% MAX Reduction rate.
- Compost only needs to be removed every week.
- Energy efficient, with no wastewater discharge.



### Specifications

#### Waste Input Capacity

25~30kg/day  
10 tons/year

#### Treatment Time

24 hours

#### Average Wastage Reduction

85%-90%

#### Power Supply

Single Phase  
AC220V, 50Hz

#### Max. Power Draw

1.2 kWatt

#### Power Consumption Reference

Average 300~350kWh/month  
(Actual electricity consumption may vary depending on use)

#### Heating Method

Electrical Heating

#### Input Door

Manual top-loading door with magnetic sensors

#### Off-Load Door

Manual front opening door with magnetic sensors

#### Safety Features

Mixing Blade automatically stops when doors are detected to be open.  
Prominent Emergency Stop.

#### Dimension

932 mm (W) x 522 mm (D) x 882 mm (H)  
Weight: 160kgs

#### Machine Material

Stainless Steel 304

#### Applications

- Apartments
- Cafes
- Restaurants
- Small-Scale Hotels
- Small-Scale Businesses

