

“Your Ideal Composting Partner”

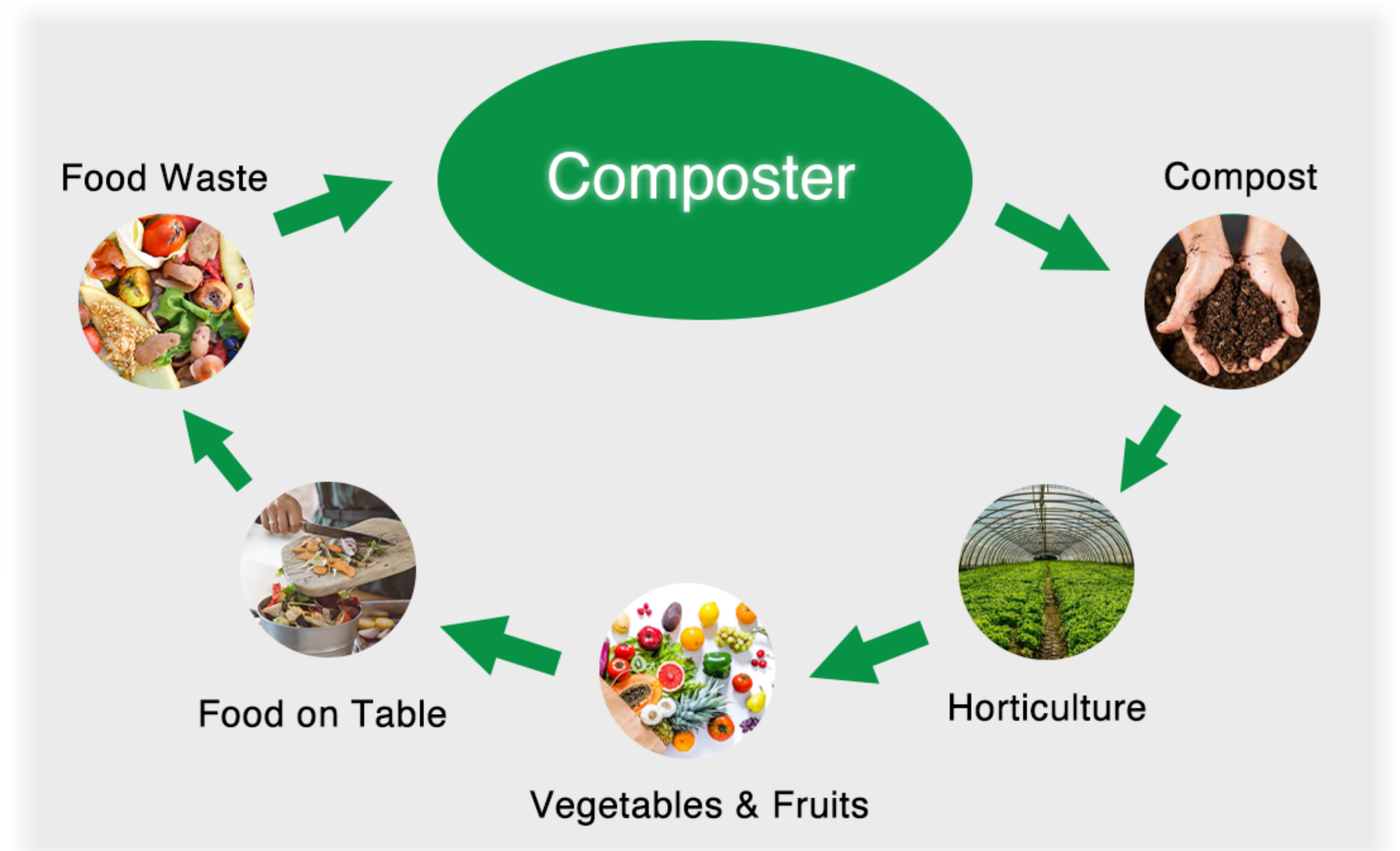
Organic Waste Composter



Turn your Food Waste, to Fertilizer

- Continuous and quick degrading process by bacterium.
- Reduce waste volume up to 90%.
- Assure odorless and pest deterrent.
- Save disposal costs.

Sustainable and socially responsible!



Features

TMK-500 Waste Compost Machine is perfect for commercial applications. It's equipped with innovative features that simplify the operating procedure for an efficient waste reduction result. Operates automatically with a few clicks and settings. Also, it doesn't make much sound while operating. The notable point here is fully automatic system is PLC-based.

Compact

- Equipped with a proper structure, is the perfect solution for industries, hotels, restaurants, resorts, hospitals, and other organizations.

Ease to Operate

- Simply open the lid and empty food waste into the machine.
- Once the lid is shut, microbes will immediately begin composting food waste.

Benefits

- Accelerated continual process to convert food waste to compost.
- 90% MAX Reduction rate.
- Compost only needs to be removed every week.
- Energy efficient, with no wastewater discharge.

Specifications

Waste Input Capacity

500-550kg/day
180 tons/year

Treatment Time

24 hours

Average Wasteage Reduction

85%-90%

Power Supply

Three Phase
AC380V, 50Hz

Max. Power Draw

15 kWatt

Power Consumption Reference

Average 2500~3000kWh/month
(Actual electricity consumption may vary depending on use)

Heating Method

Electrical Heating

Input Door

Manual top-loading door with magnetic sensors

Off-Load Door

Manual front opening door with magnetic sensors

Safety Features

Mixing Blade automatically stops when doors are detected to be open.
Prominent Emergency Stop.

Dimension

3,302 mm (W) x1,752 mm (D)x 1,850 mm (H)
3,302 x 2,189 x 1,977mm (with lifter)
Weight: 1,800kgs

Machine Material

Stainless Steel 304

Applications

- Organizations
- Hotels
- Resorts
- Industries

